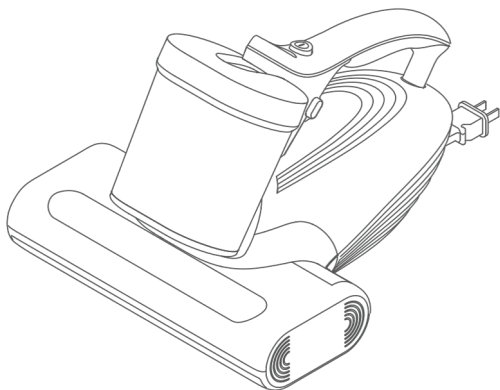


UWANT

M500 Mattress Vacuum Cleaner Product Manual

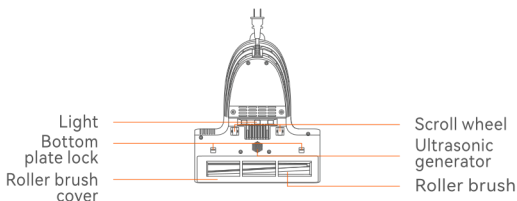
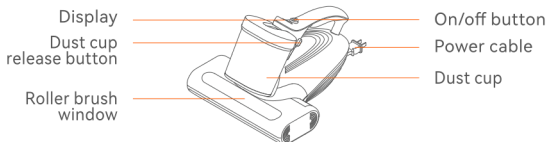


Please read this manual carefully before use and keep it properly
for future reference.

 **Please read this manual carefully and keep it properly for future reference.**

- This product is an electric appliance. Do not let the machine run alone without supervision. If you do not use it for a long time, please turn it off;
- When cleaning, repairing or temporarily not using the machine, it must be turned off;
- Do not use the machine to inhale heating objects such as carbon and cigarette butts, sharp objects such as broken glass, corrosive liquids, gasoline, alcohol and other flammable and explosive items, or it may damage the machine or cause a fire, resulting in personal injury and other accidents;
- Do not use this product to absorb water or wet dust, and avoid using the machine in rain, water or in wet places (such as bathroom, toilet, laundry room, etc.) to avoid malfunctions;
- Avoid approaching heating appliances or exposure to the sun in order to avoid fire;
- Do not let children play with or operate the machine in order to avoid accidents;
- Avoid running for a long time with the suction port blocked in order to avoid damage to the machine;
- This product is equipped with an Light, do not look at the bottom of the machine when it is turned on in order to prevent Light rays from harming the human body;
- Do not let Light rays irradiate the plants, so as not to damage the plants. Do not concentrate Light rays in one place for continuous use, which may cause damage to the cleaning object;
- Do not sit on this product, so as not to damage the machine;
- Do not remove the roller brush assembly when the machine is running, so as not to cause body injury;
- This product is only used to clean and remove mites from mattresses, blankets, pillows, sofas and other textiles;
- This appliance can be used by children aged from 8 years and above and persons with reduced physical, sensory or mental capabilities or lack of experience and knowledge if they have been given supervision or instruction concerning use of the appliance in a safe way and understand the hazards involved. Children shall not play with the appliance. Cleaning and user maintenance shall not be made by children without supervision;
- If the supply cord is damaged, it must be replaced by the manufacturer, its service agent or similarly qualified persons in order to avoid a hazard.

• Component names



① Main unit



② Filter components



③ Display screen panel

• Cleaning method (must read when using the product for the first time)

Place the machine on the bed. After powering on, press the ON /OFF button and gently push it forth and back to achieve cleaning.

• Usage techniques

- You don't need to lift or hold the machine hard when using it, just put it on the bed and push it back and forth;
- Check whether the Light is on. You can lift it horizontally about 1cm away from the bed surface to see the Light;
- To avoid accidental injury, the Light must be within about 3cm of the object being illuminated and the machine's inclination angle does not exceed 30 degrees before it can work properly. Outside this range, the Light will automatically turn off;
- It is normal for some odor to be discharged from the air outlet when the machine is used for the first time and is not harmful to human health. It will disappear naturally after subsequent use;
- The sound of high-speed airflow generated when the machine is working is a normal phenomenon;
- For first time use, it is recommended to use it 2-3 times a week; for subsequent use, it is recommended to use it once a week.

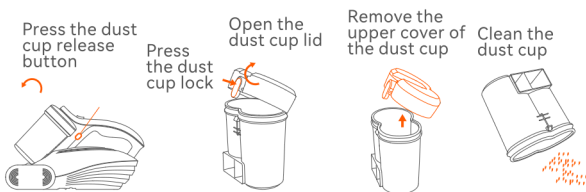
⚠ Note:

- When the machine is not used for a long time, please place it in a cool and dry place, and never place it in direct sunlight or a humid environment;
- When used for the first time, more garbage will be cleaned up, and if you continue to use it, the garbage absorbed will be reduced accordingly. After use, be sure to clean the dust cup assembly.

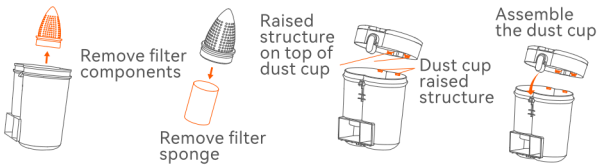
III

Maintenance

• Dust cup cleaning



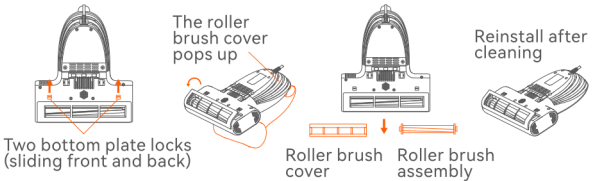
• Filter component cleaning and dust cup assembly



⚠ Notice:

- It is recommended to clean the dust cup and filter cotton after each use; when the dust cup is full during use, it is recommended to clean it immediately, otherwise it will affect the use effect;
- When cleaning the filter cotton, do not scrub violently; after washing the seat cup assembly, make sure that all parts of the dust cup are completely dry before putting it into the host;
- After the cumulative use time of the filter cotton reaches 30-50 hours, it is recommended to purchase and replace the filter cotton at the official store to avoid affecting the performance of the machine.

• Roller brush cleaning and installation



⚠ Notice:

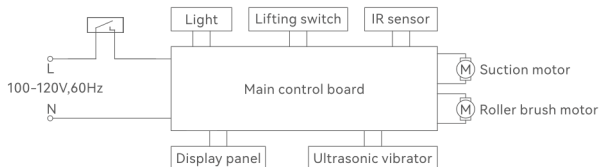
- When cleaning the roller brush, be sure to turn off the machine and unplug the power source to avoid accidentally starting the machine and causing personal injury!
- Please wipe the transparent cover of the UV lamp before use to ensure the best sterilization effect;
- Do not look directly at the UV light when it is on, and do not let the UV light shine directly on your skin.

Before entrusting the maintenance department, please check according to the following points:

Failure	Possible cause	Treatment method
The machine does not work	Whether the machine is powered	Connect the power supply
	The power button is not pressed.	Press the power button.
The suction becomes smaller	The suction port is blocked .	Clean the suction port.
	There are too many foreign objects in the filter sponge.	Clean the dust cup and filter sponge.
	There are many foreign objects in the filter.	Clean up foreign objects in the filter.
The Light does not work	The two rollers under the machine do not touch the surface of the object at the same time.	Place the machine flat on the object and ensure that both rollers are compressed .
	The two rollers under the machine are stuck and can't move freely.	Clean the rollers to ensure that the two rollers can move up and down freely or contact after-sales service.
	The Light is damaged.	Contact after-sales service to replace the Light.
The machine suddenly stops working	The dust cup is full.	In order to avoid overheating of the motor, a safety mechanism has been added to prevent overheating. If this happens, please stop using, clean up the blockage, and pause for two hours before using again.
	The suction port of the machine is blocked.	
	The cyclone is blocked by foreign matter.	
The roller brush suddenly stops working	The filter is blocked by foreign matter.	Take out the roller brush as required and clean it before using.

If there are other faults and special tools are needed, please go to the designated service outlet for repair and replacement.

Product name	Mattress vacuum cleaner
Product model	M500
Rated voltage	100-120V
Rated power	450W
Rated frequent	60Hz



Part name	Hazardous substances					
	Lead (Pb)	Mercury (Hg)	Cadmium (Cd)	Hexavalent chromium (Cr (VI))	Polybrominated biphenyls (PBB)	Polybrominated diphenyl ethers (PBDE)
PCBA and components	X	○	○	○	○	○
Power cord	X	○	○	○	○	○
Light	○	○	○	○	○	○
Motor	X	○	○	○	○	○
Shell	○	○	○	○	○	○
Other accessories	○	○	○	○	○	○

The logo for UWANT, featuring the word "UWANT" in a stylized, orange, sans-serif font. The letters are bold and have a modern, geometric feel.

Suzhou Jiandan Youwei Technology Co., Ltd.

Place of Origin: Suzhou, Jiangsu Province
Address: Room 1518, Building B, Kaiping Business Center, No. 11666, East Taihu Avenue,
East Taihu Ecological Tourism Resort (Taihu New Town), Wujiang District, Suzhou, China